

透科自动化

PROFINET SRX-PN S7-200SMART



2023-04-03

2023 4 3

2023 4 3

S7-200SMART PLC PROFINET IO

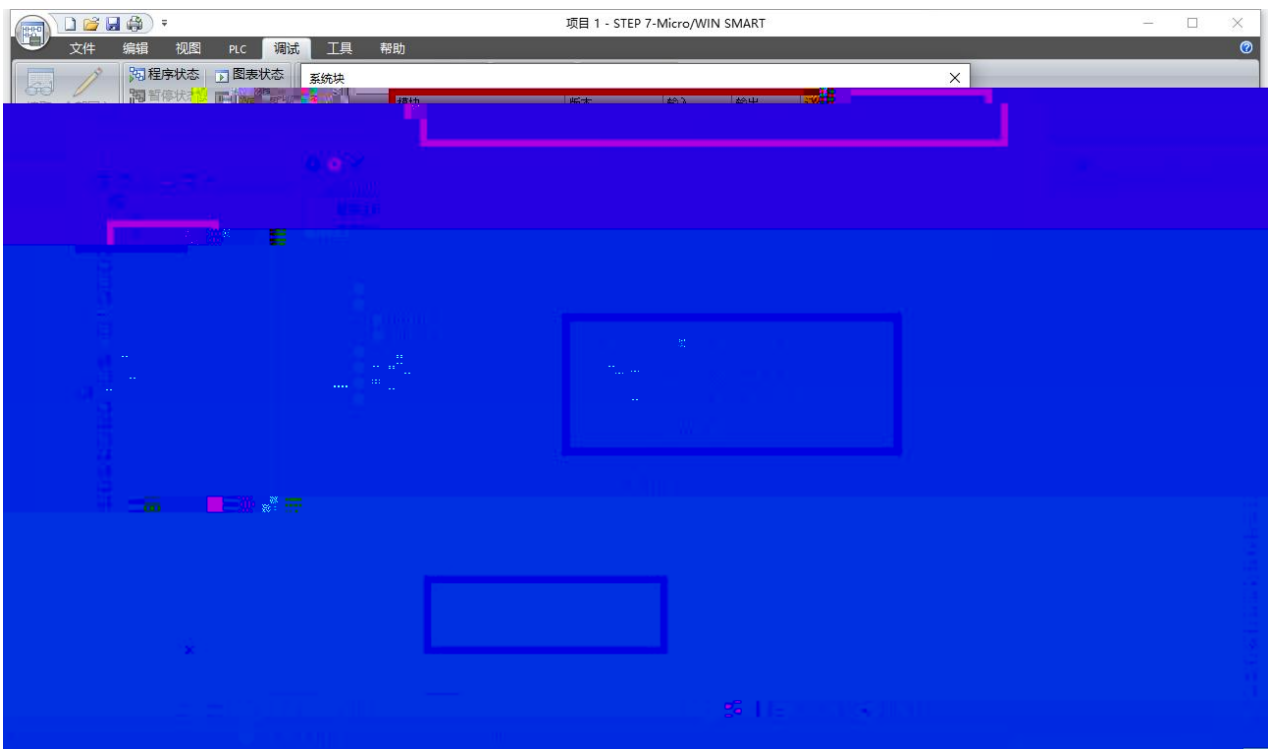
S7-200SMART PLC PROFINET IO step7 IO
IO

- STEP 7-MicroWIN SMART

- IO GSDML-V2.31-LATCOS-SRX_PN-20220901

1. S7-200SMART PLC IO
2. PLC IO X1 IO X2
Roma lab Serving

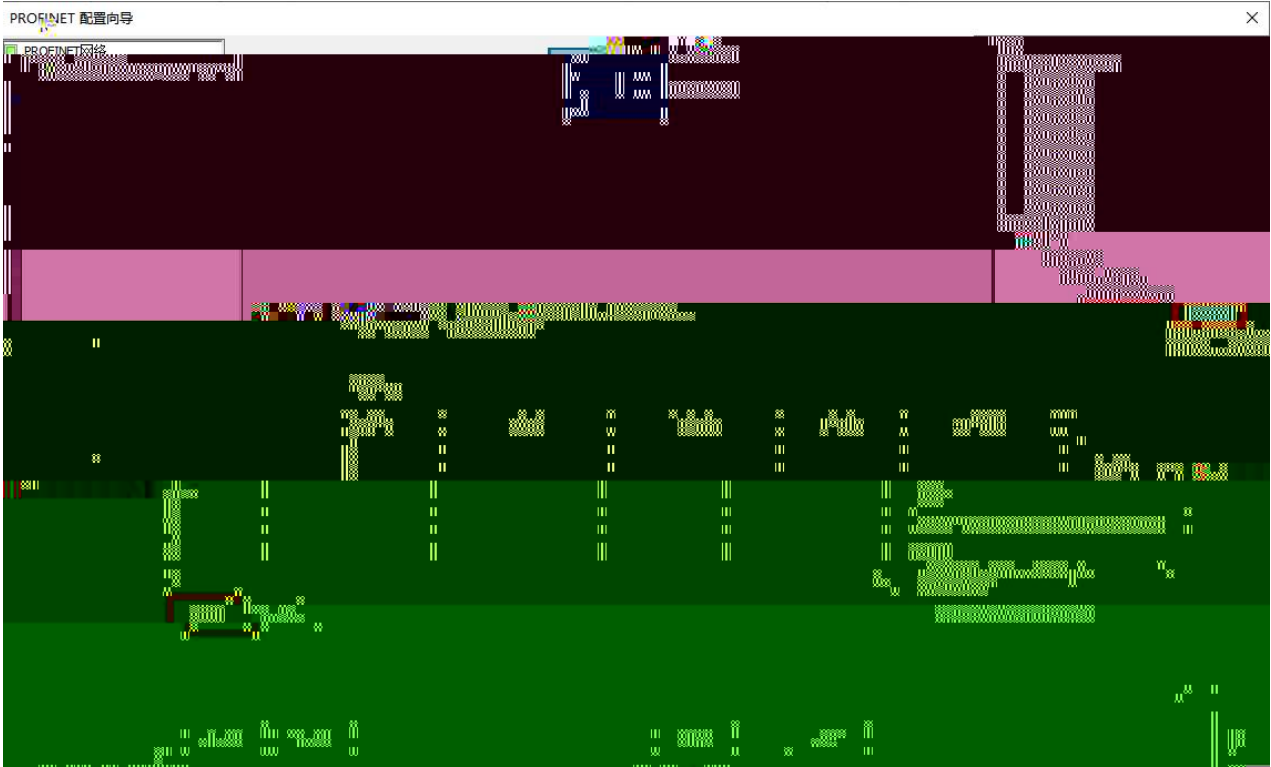
1. S7-200SMART STEP-7-MicroWIN-SMARTV2.4 PLC



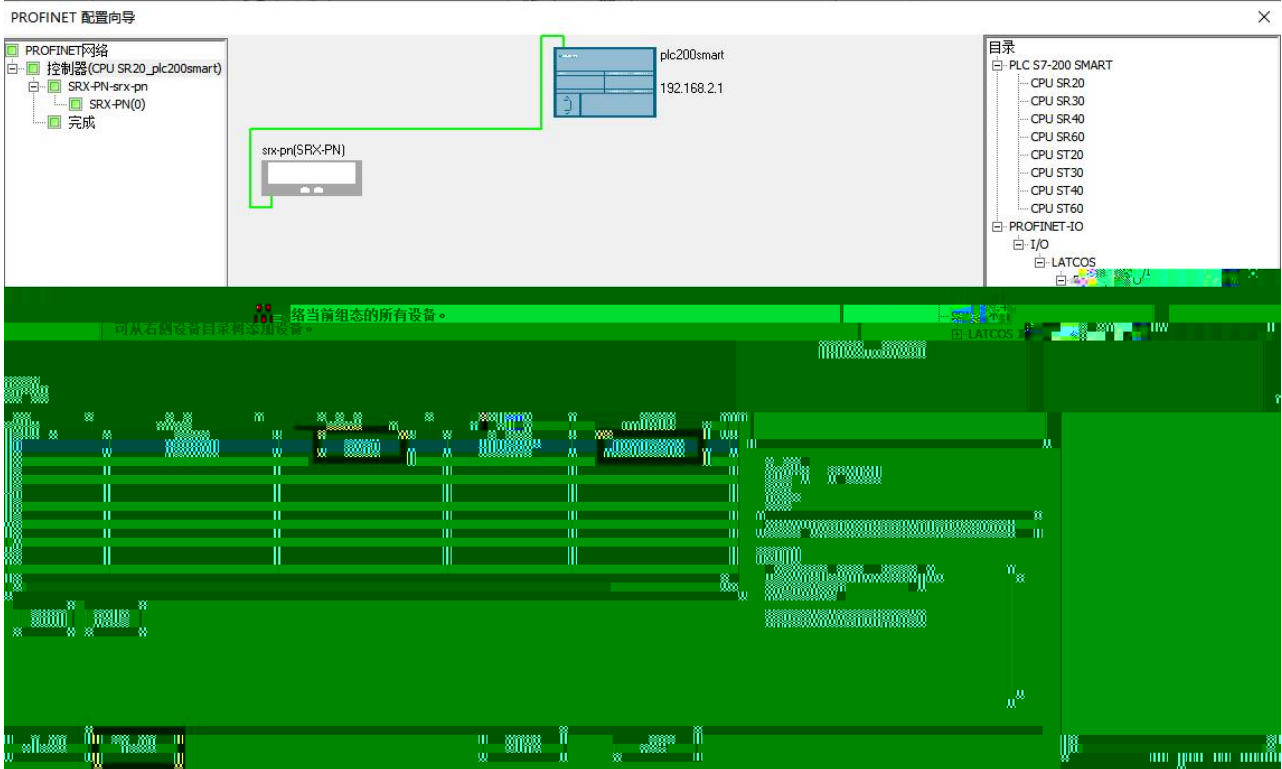


3.PROFINET I/O JP-PN

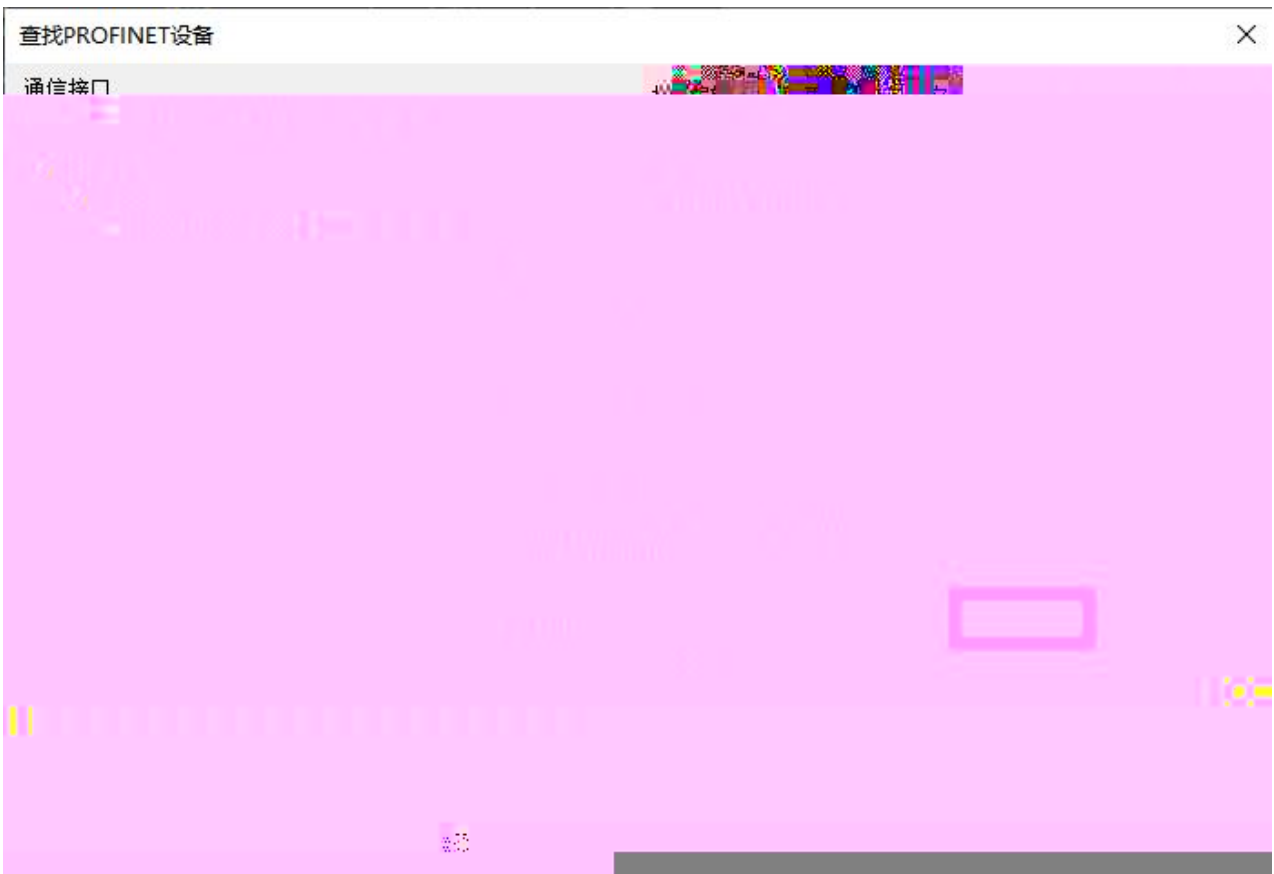
" " " ROFNOT



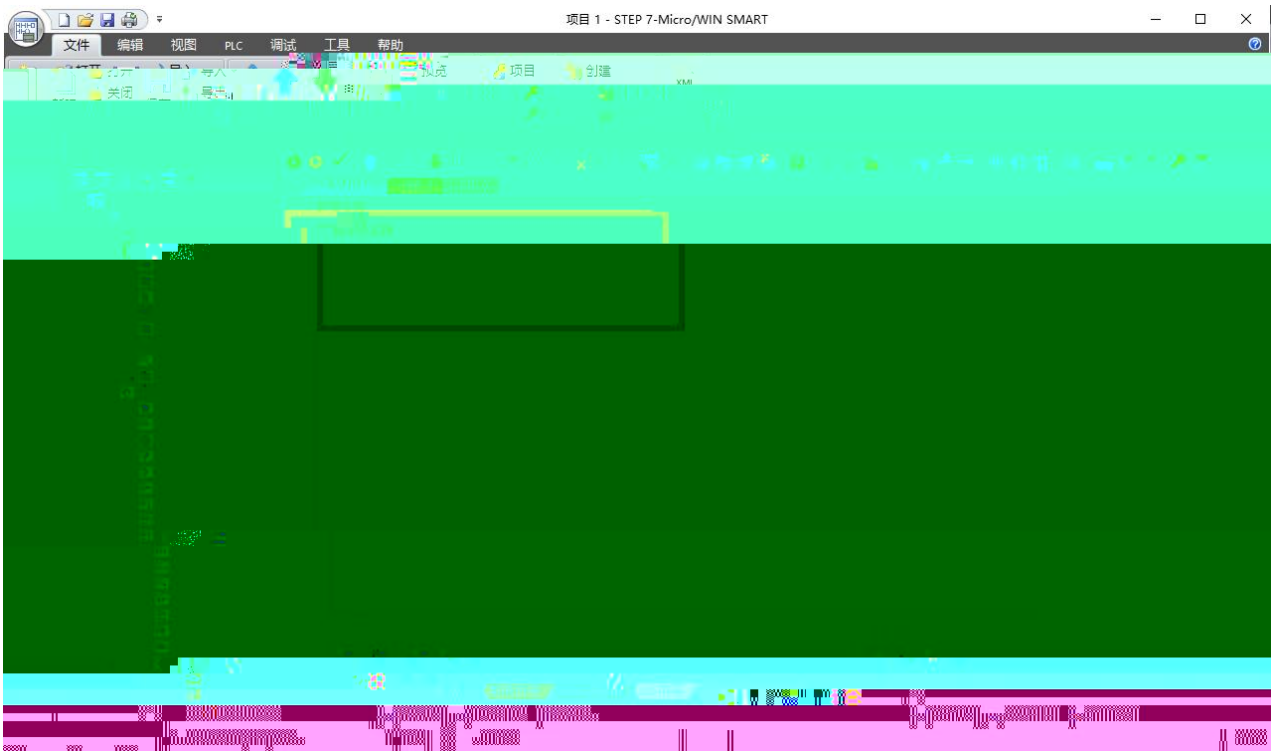
IP







5. JP-PN



6. PLC

“ ”

“ CPU ”

