

S7-300 PLC PROFINET LUC-PNB IO

LUC-PNB S7-300PLC IO PROFINET .xml LUC-PNB IO LUC-PNB IO

- STEP 7 V5.5 SP2

- LUC-PNB IO GSDML-V2.35-LATCOS-LUC_PN-20230320

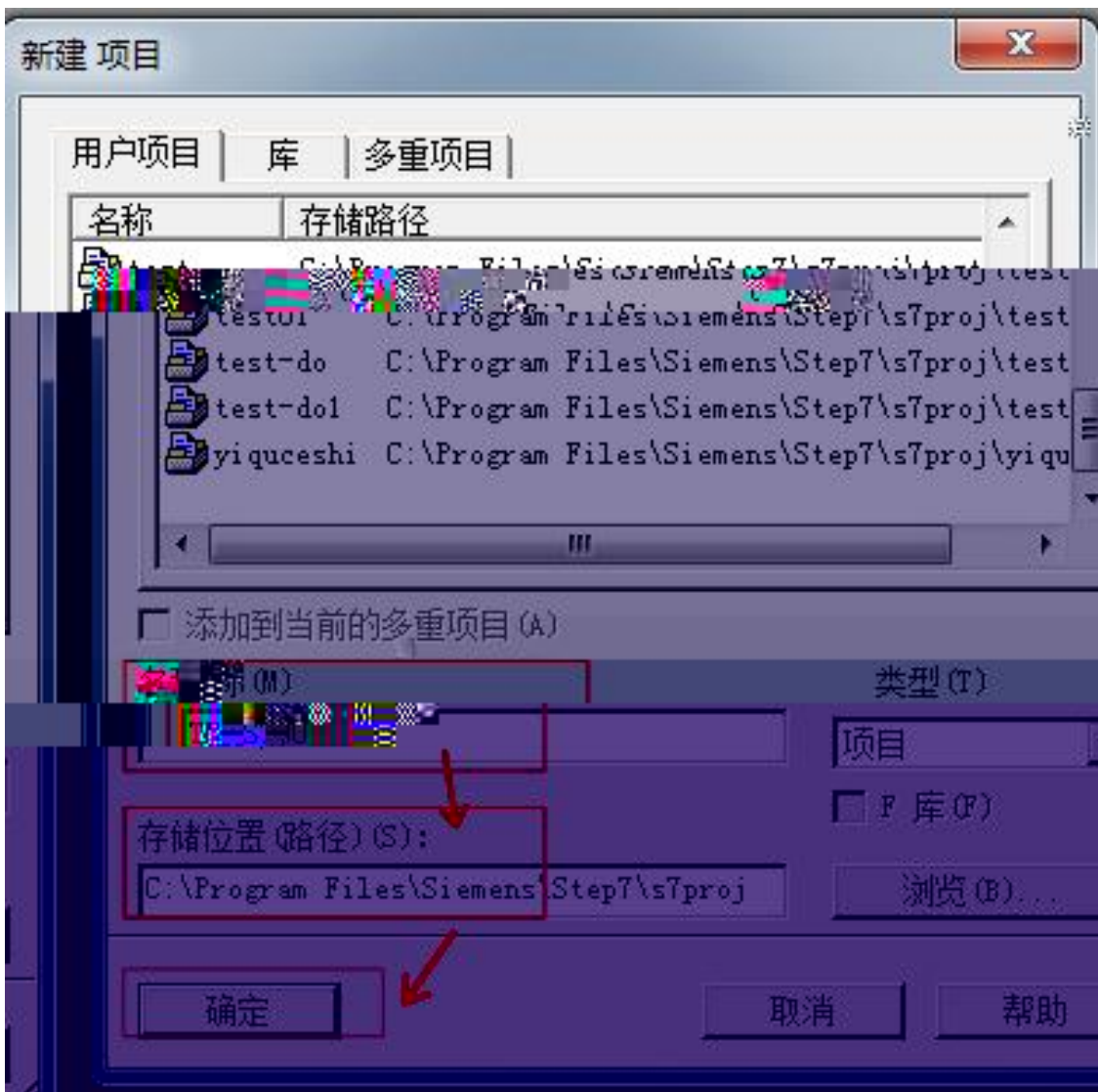
1. S7-300PLC LUC-PNB IO

2. PLC LUC-PNB IO X1P1 IO
X1P2

1.

STEP7





PROFINET

TCP/IP

SIMATIC Manager

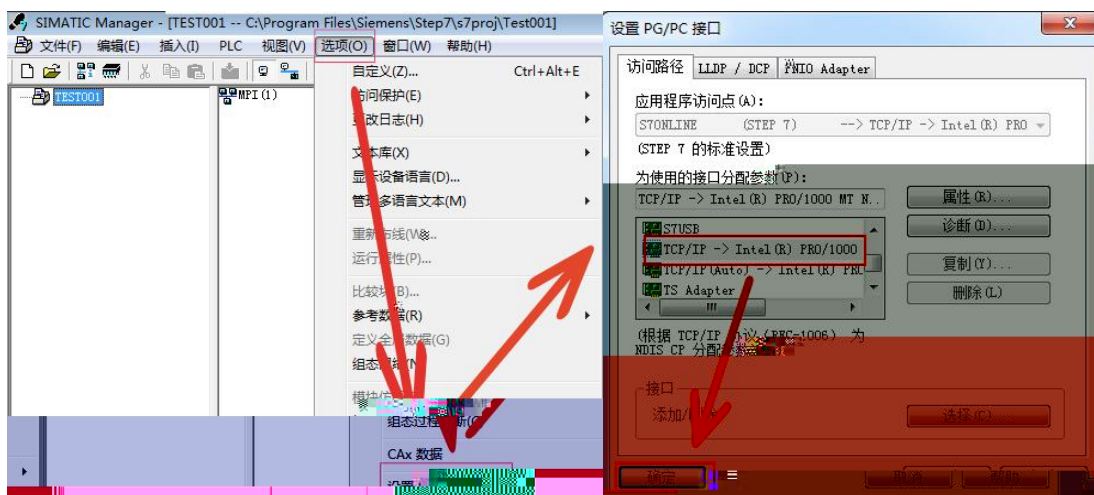
" "

PG/PC ..."

"TCP/IP->Intel® PRO /1000MT..."

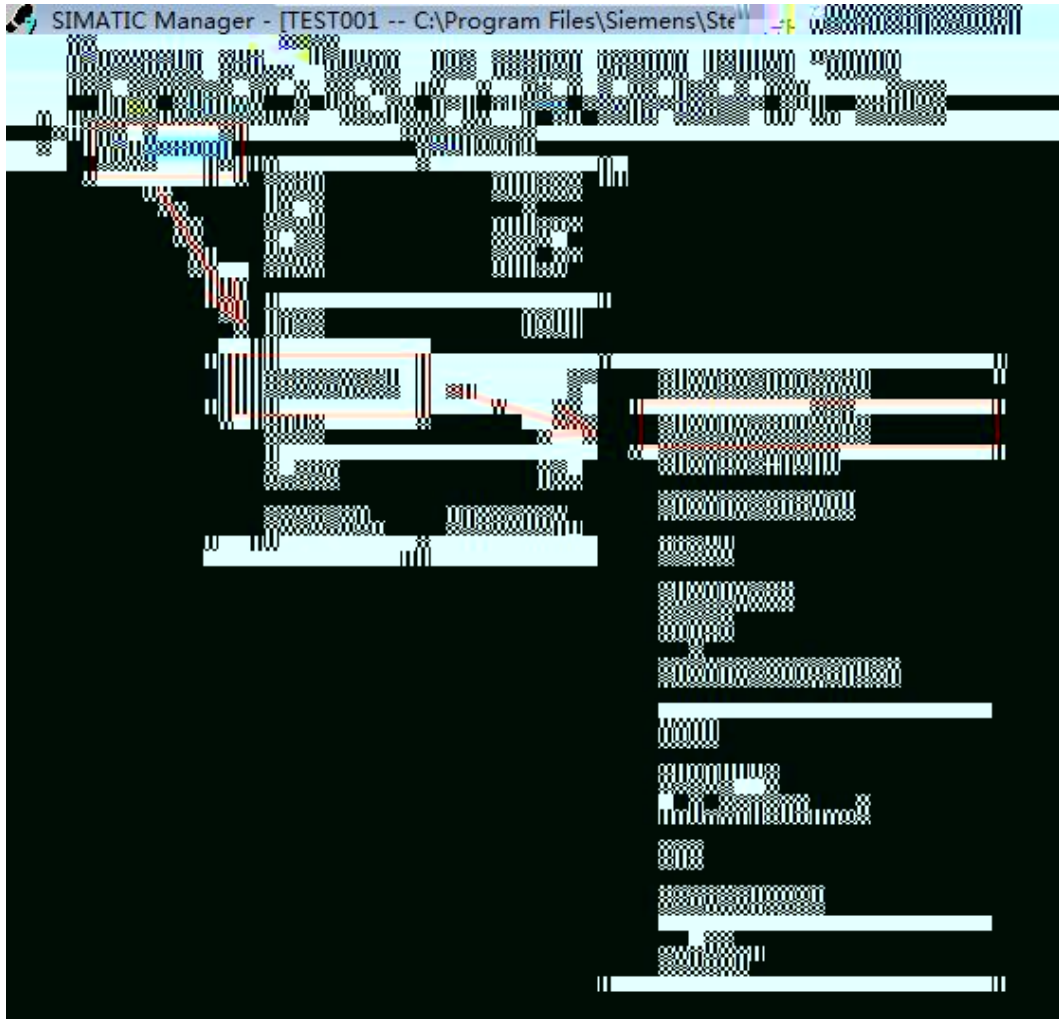
"Intel® PRO /1000MT..."

PG/PC



2.

SIMATIC300 CPU315-2DP/PN



3.

“HW Config”

IP

CPU

PN-IO

Ethernet(1)

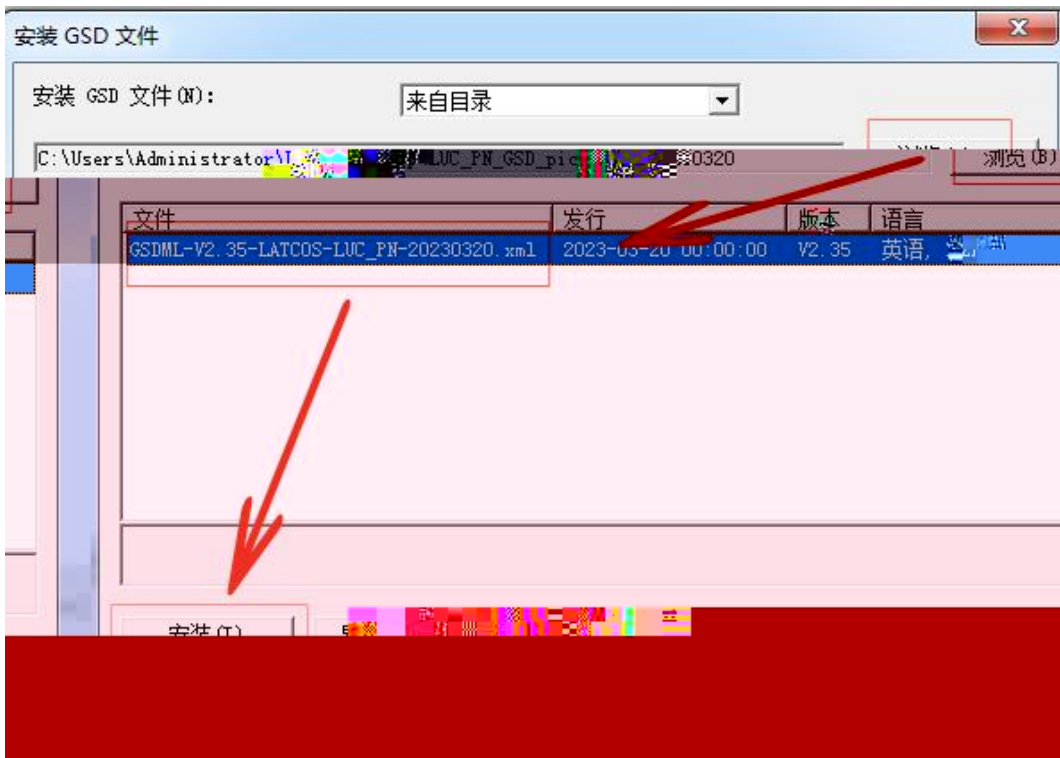


4. GSD

" " " GSD ..."



" " .XML " "



5.

Ethernet(1)

IO

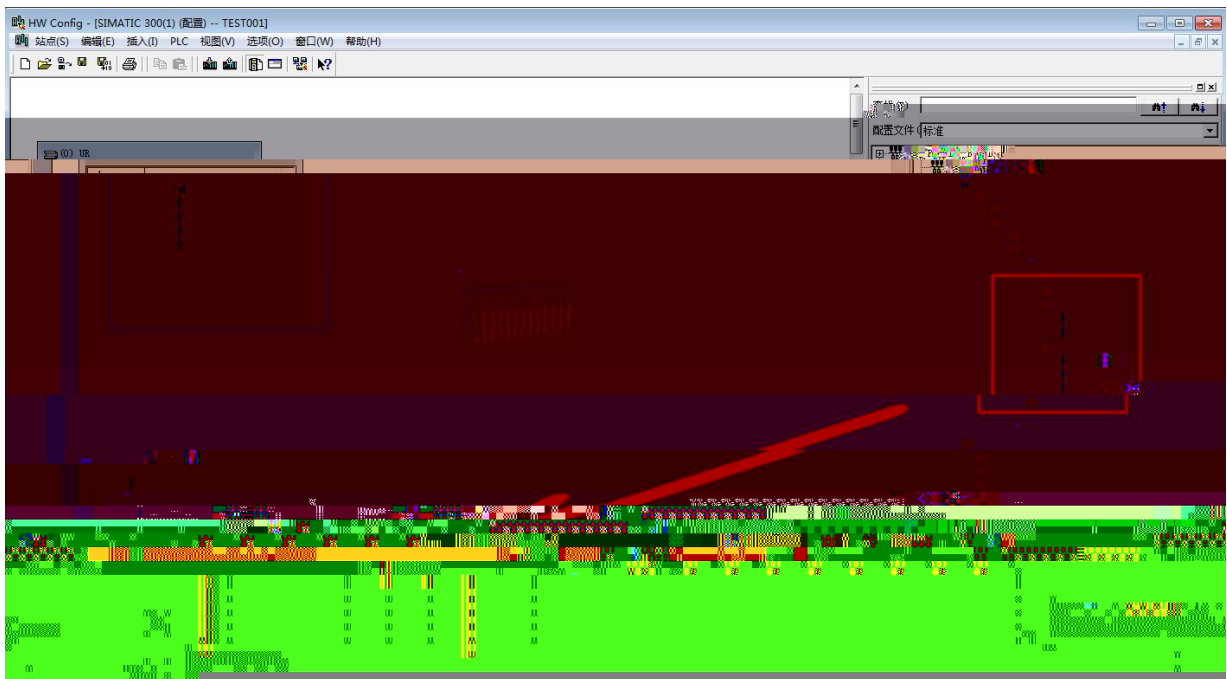
IO

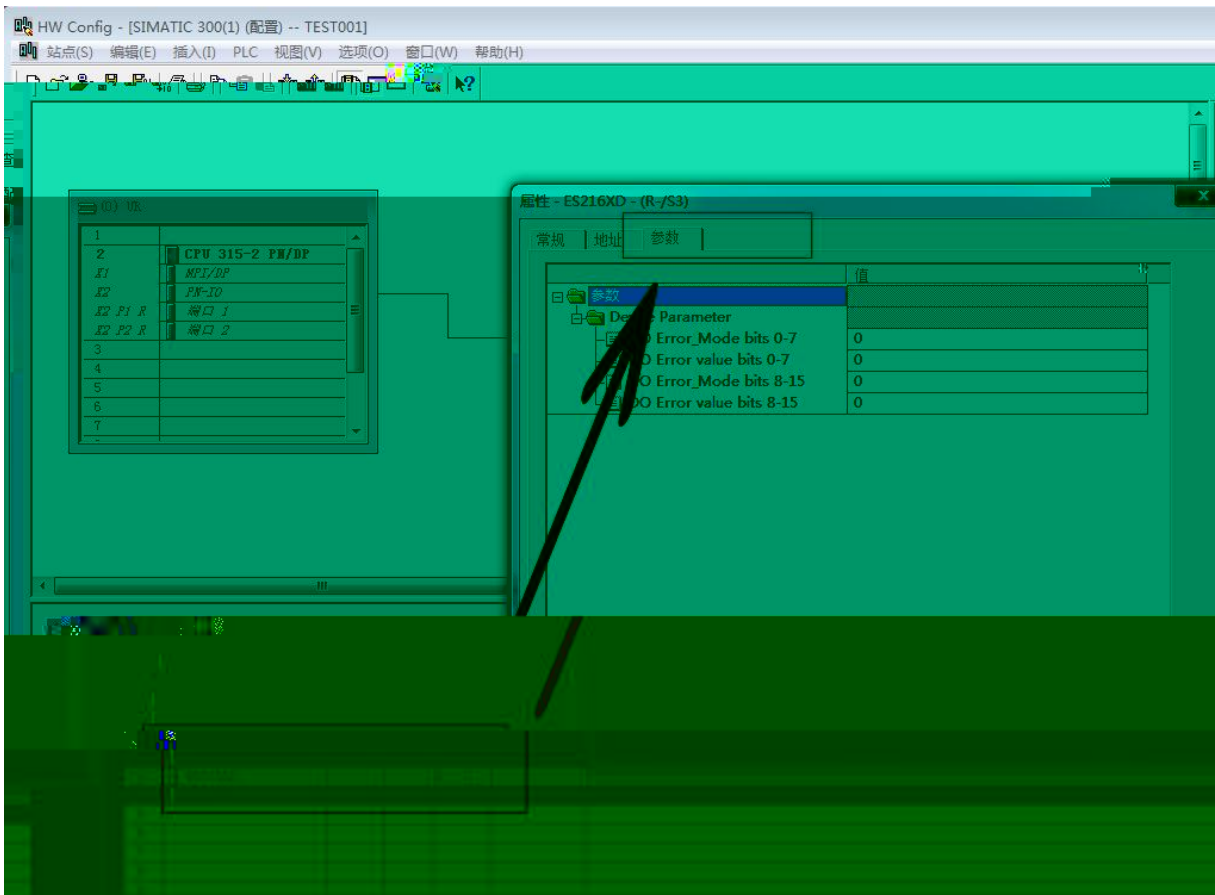
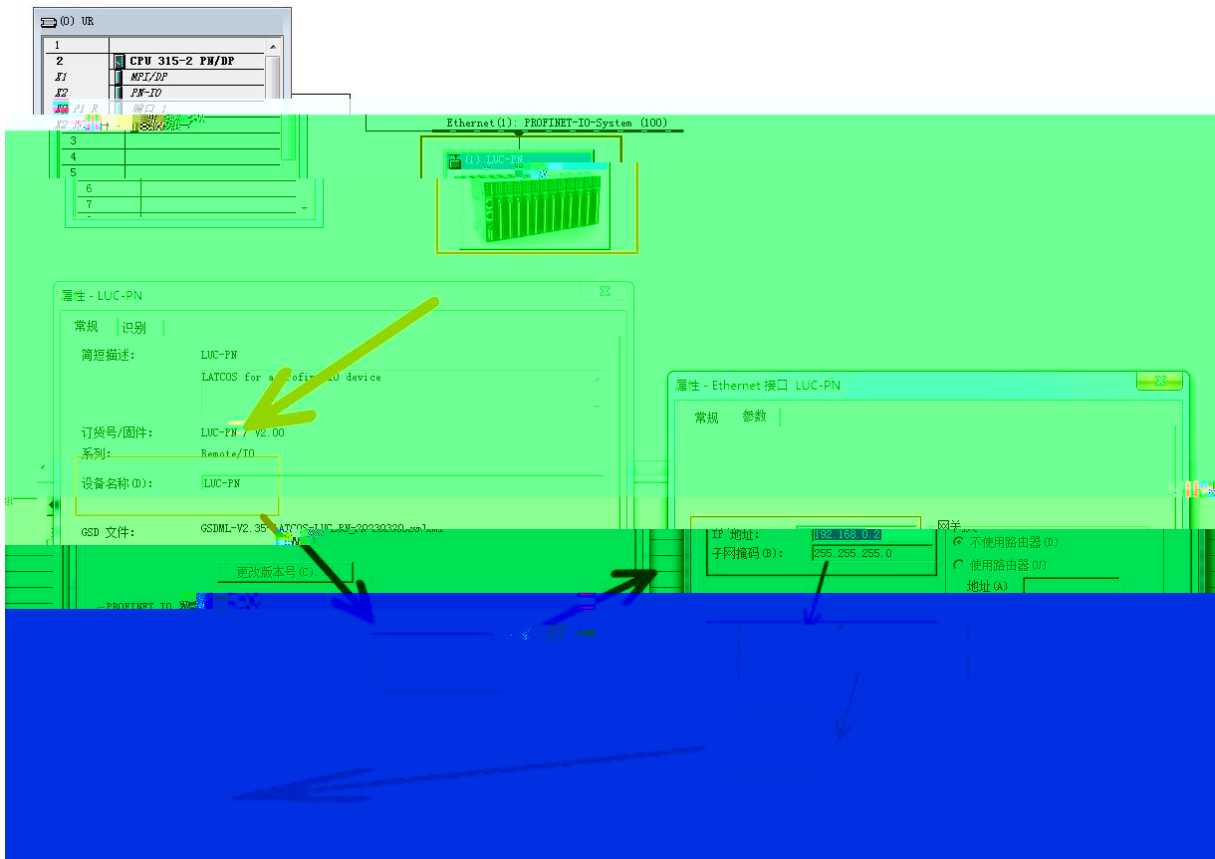
PROFIBUS

PROFINET IO LUC-PN

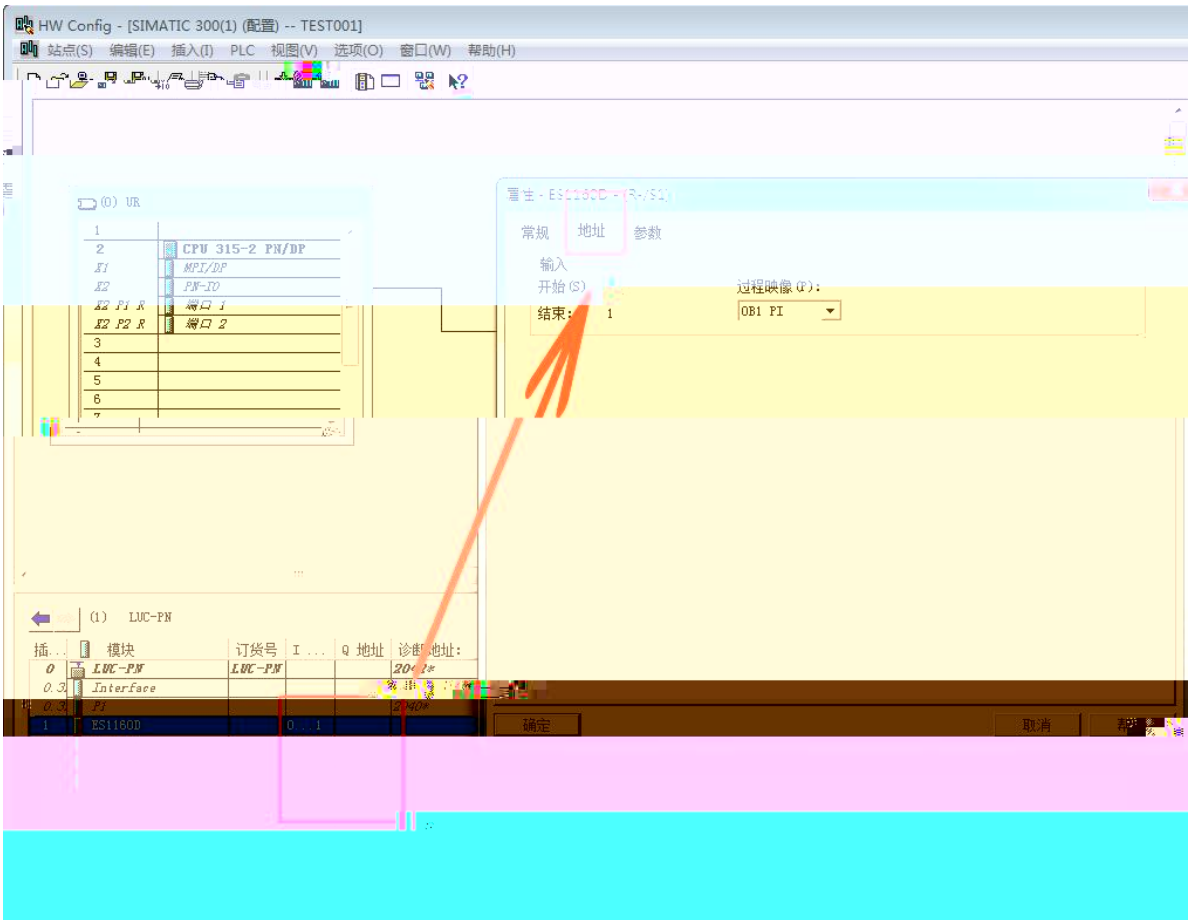
Ethernet(1)

IP





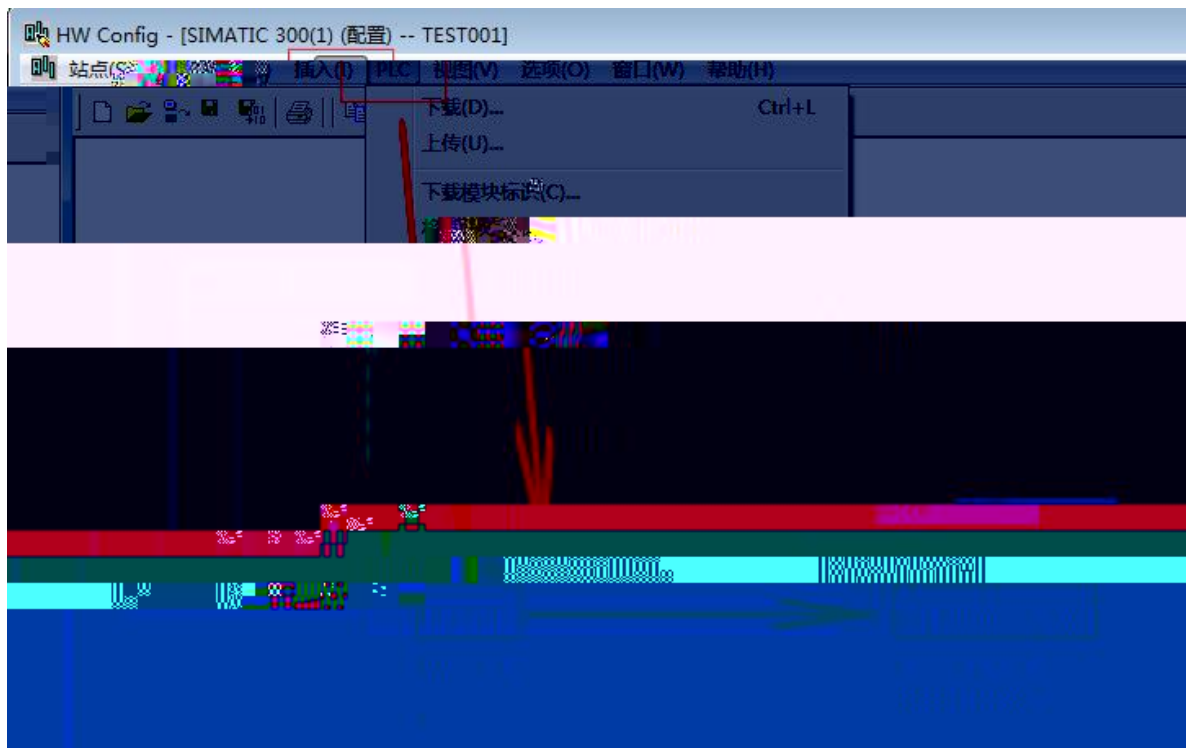
STEP7



6.

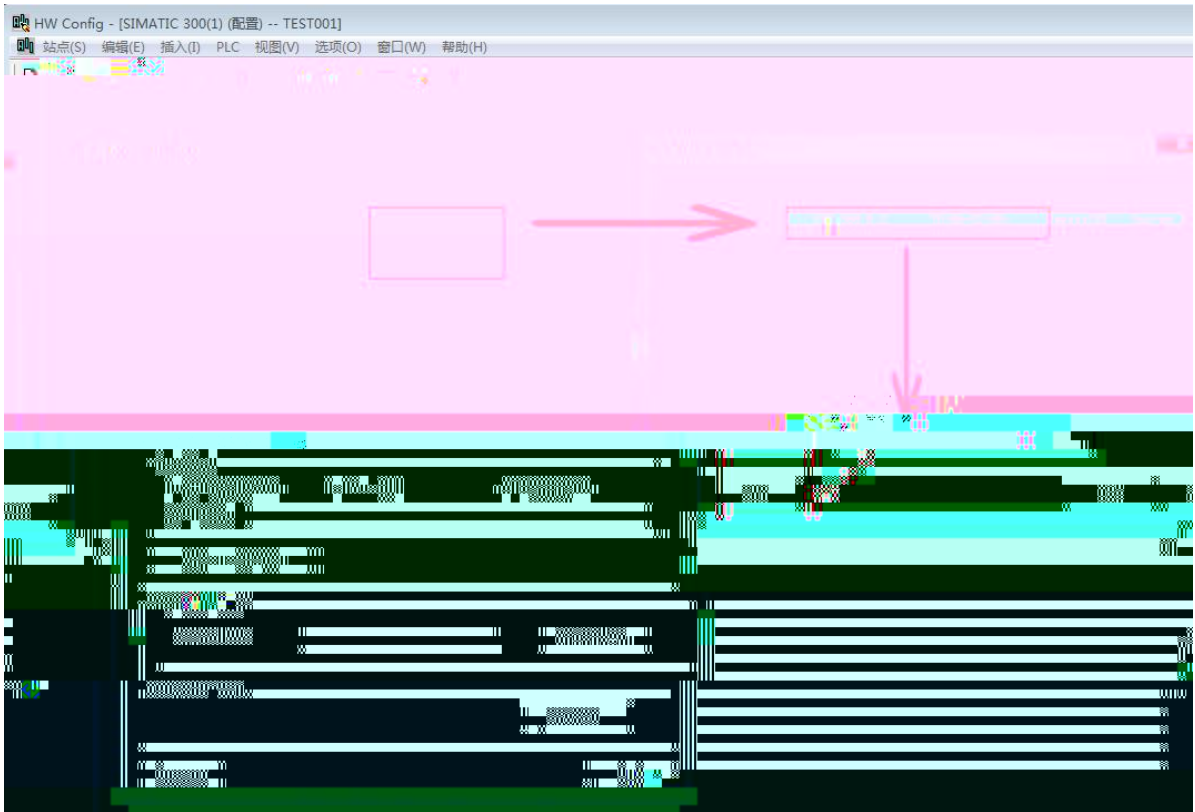
IO

"PLC" "Ethernet" " Ethernet "



Ethernet

MAC



PLC

IP

7.

